

FRIENDS OF REPTON EXECUTIVE COMMITTEE FOR 2024-2025



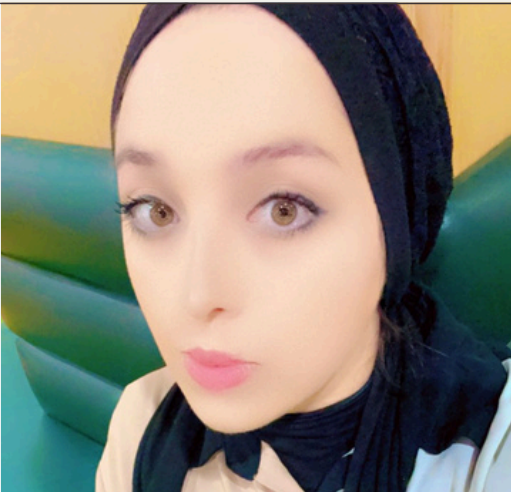
FRY CAMPUS



**SENIOR CHAIR -
SOMALY**



**SENIOR COMMUNITY
LIAISON - ARCHIE**



**JUNIOR CHAIR -
NADINE**



**JUNIOR COMMUNITY
LIAISON - RIHAM**

ROSE CAMPUS



CHAIR - STACY



**COMMUNITY LIAISON
- GABRIELA**

BOTH CAMPUSES



**TREASURER -
JESSIE**



**TREASURER -
NATALIA**